

WEB GRADING MODULE

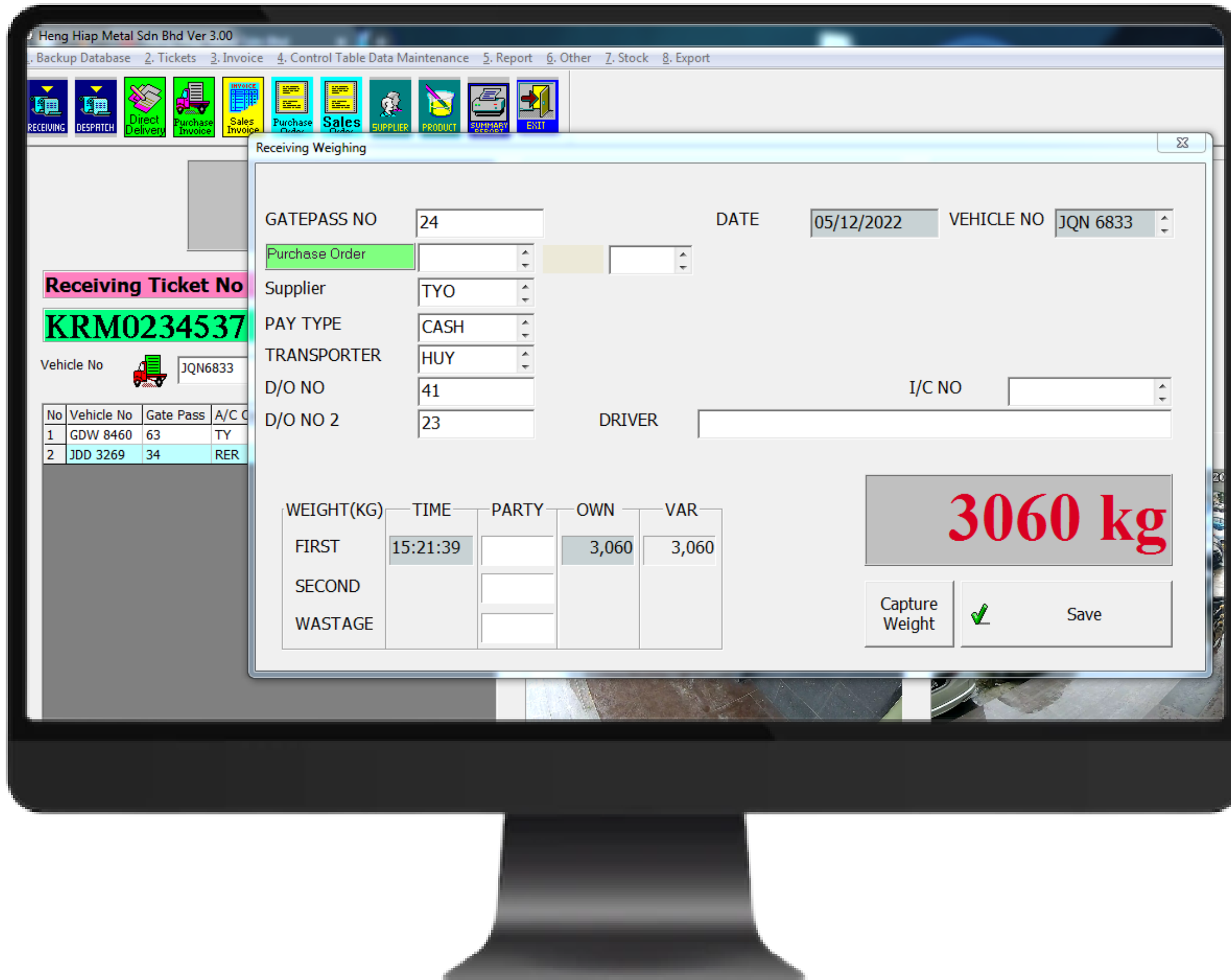
SAMPLE SHOWCASE
NOV, 2022





WEB GRADING MODULE sample showcase

Key in vehicle
number on first
weigh.

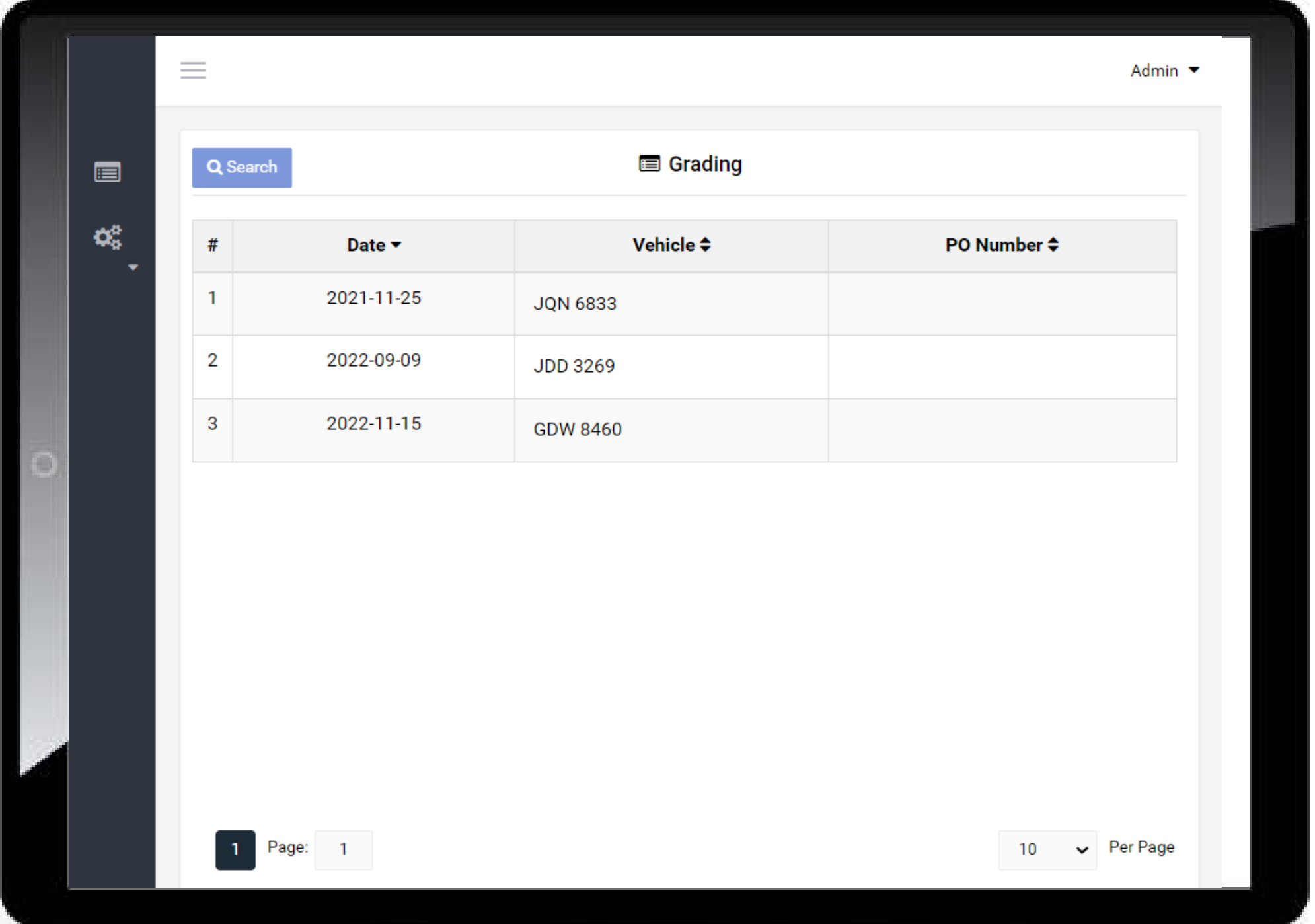


Key in weighing information.



First weighing information saved.

Listing shown on
the tablet after first
weigh.

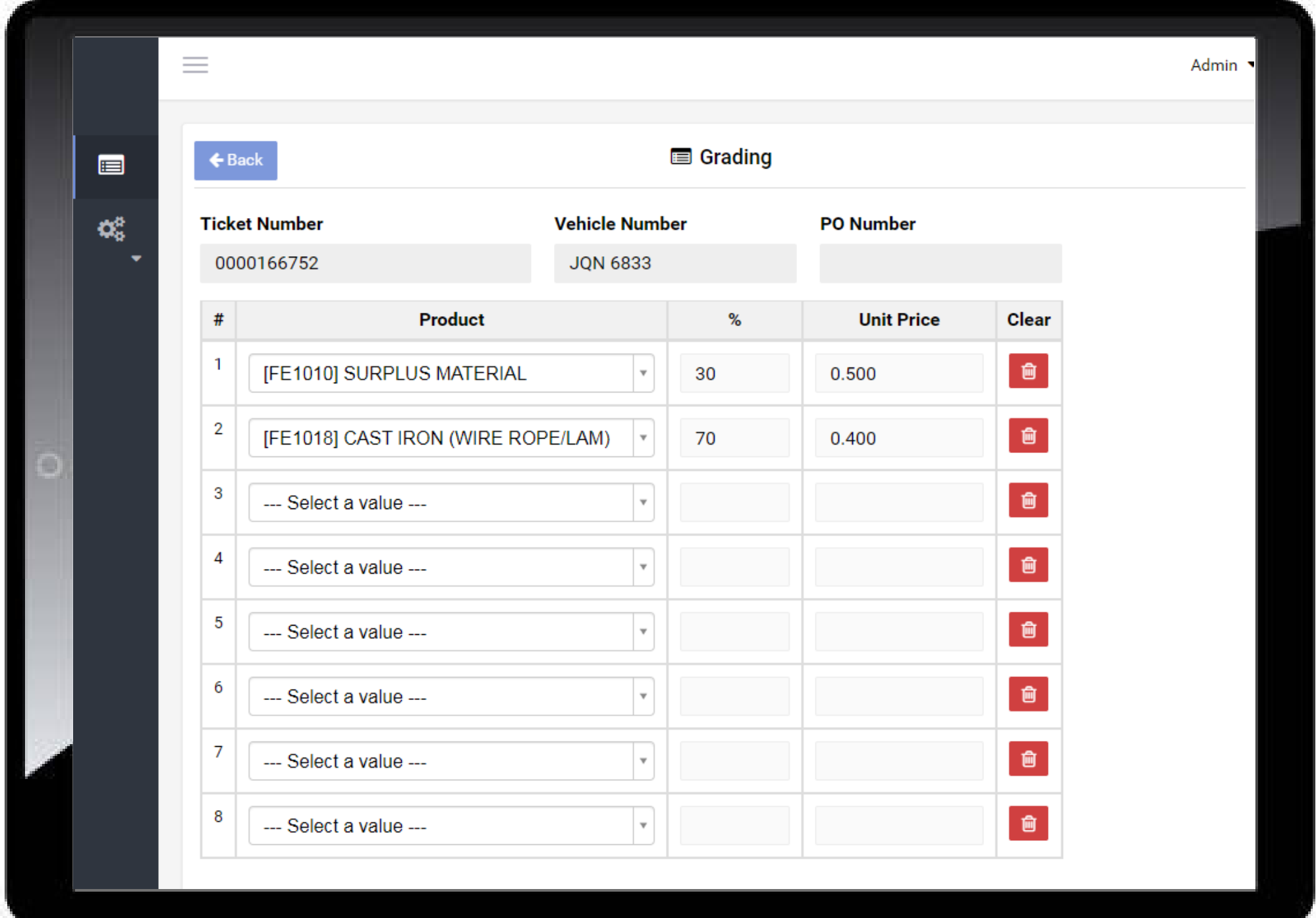


The image shows a tablet displaying a web application interface. The interface includes a search bar, a table with three columns (#, Date, Vehicle, PO Number), and pagination controls at the bottom. The table contains three rows of data.

#	Date ▼	Vehicle ↕	PO Number ↕
1	2021-11-25	JQN 6833	
2	2022-09-09	JDD 3269	
3	2022-11-15	GDW 8460	

Page: 1 Per Page 10









Grader define
product and product
percentage.



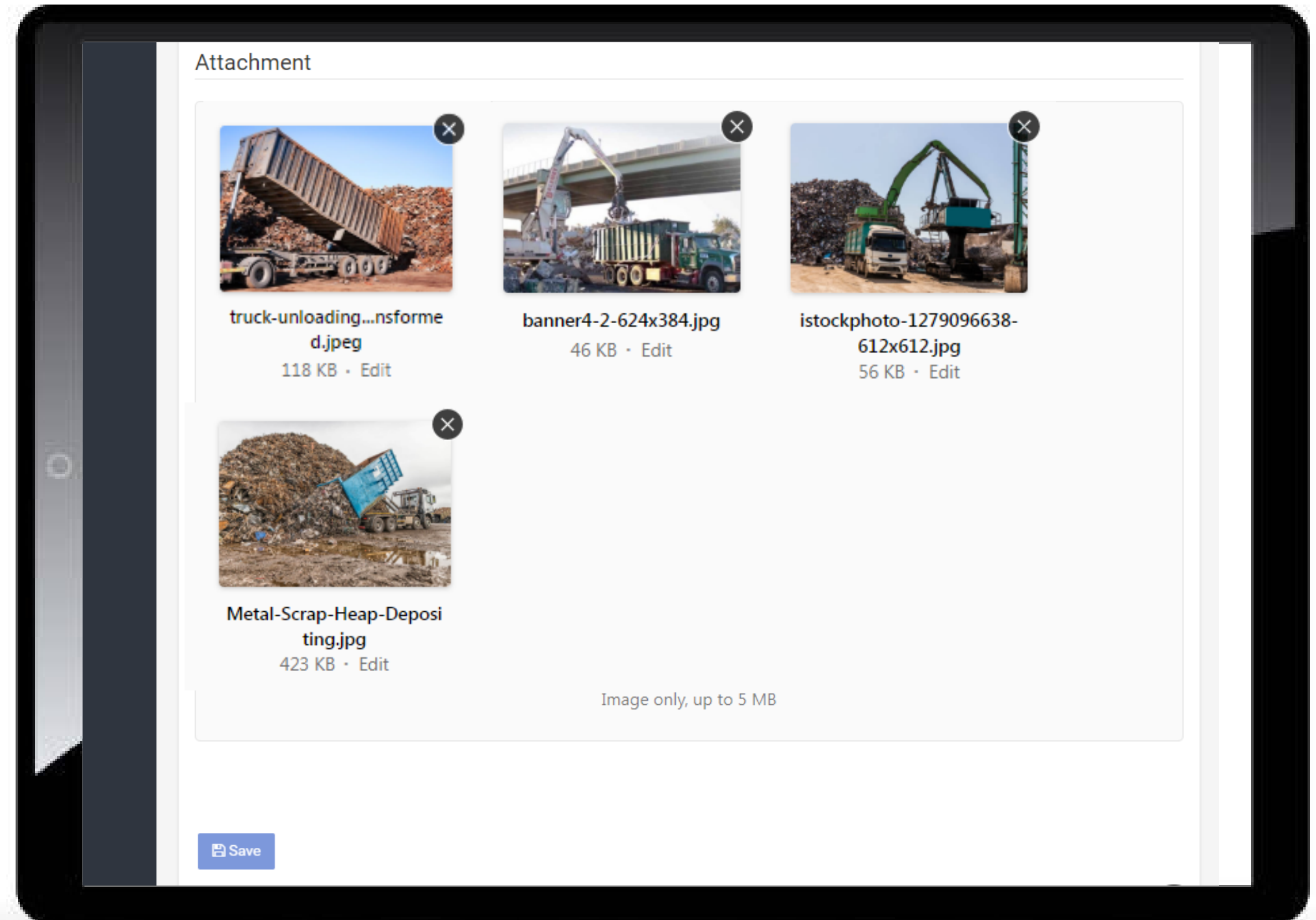
Admin

← Back Grading

Ticket Number: 0000166752 Vehicle Number: JQN 6833 PO Number:

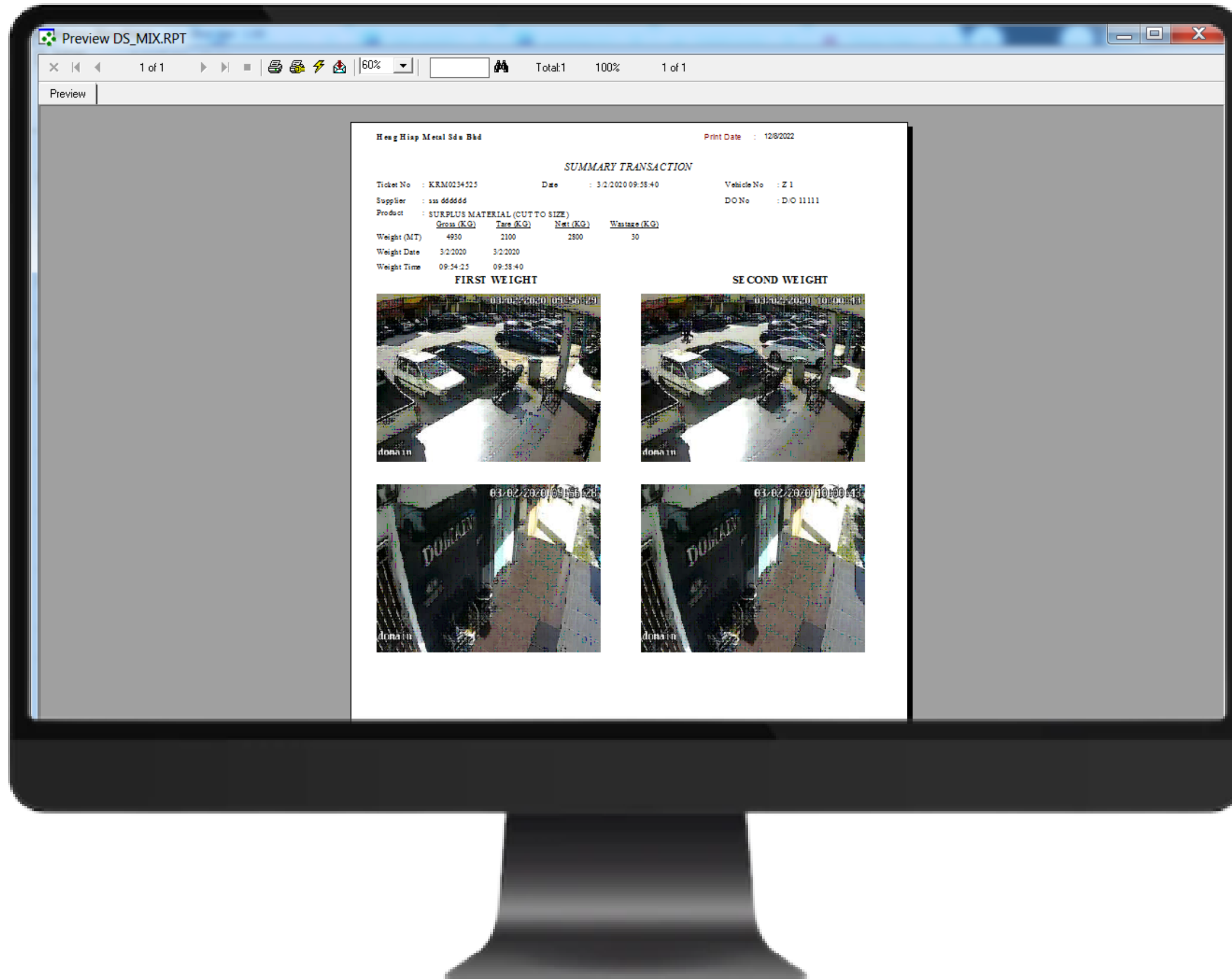
#	Product	%	Unit Price	Clear
1	[FE1010] SURPLUS MATERIAL	30	0.500	
2	[FE1018] CAST IRON (WIRE ROPE/LAM)	70	0.400	
3	--- Select a value ---			
4	--- Select a value ---			
5	--- Select a value ---			
6	--- Select a value ---			
7	--- Select a value ---			
8	--- Select a value ---			

Add photos captured by the tablet's camera as attachment.



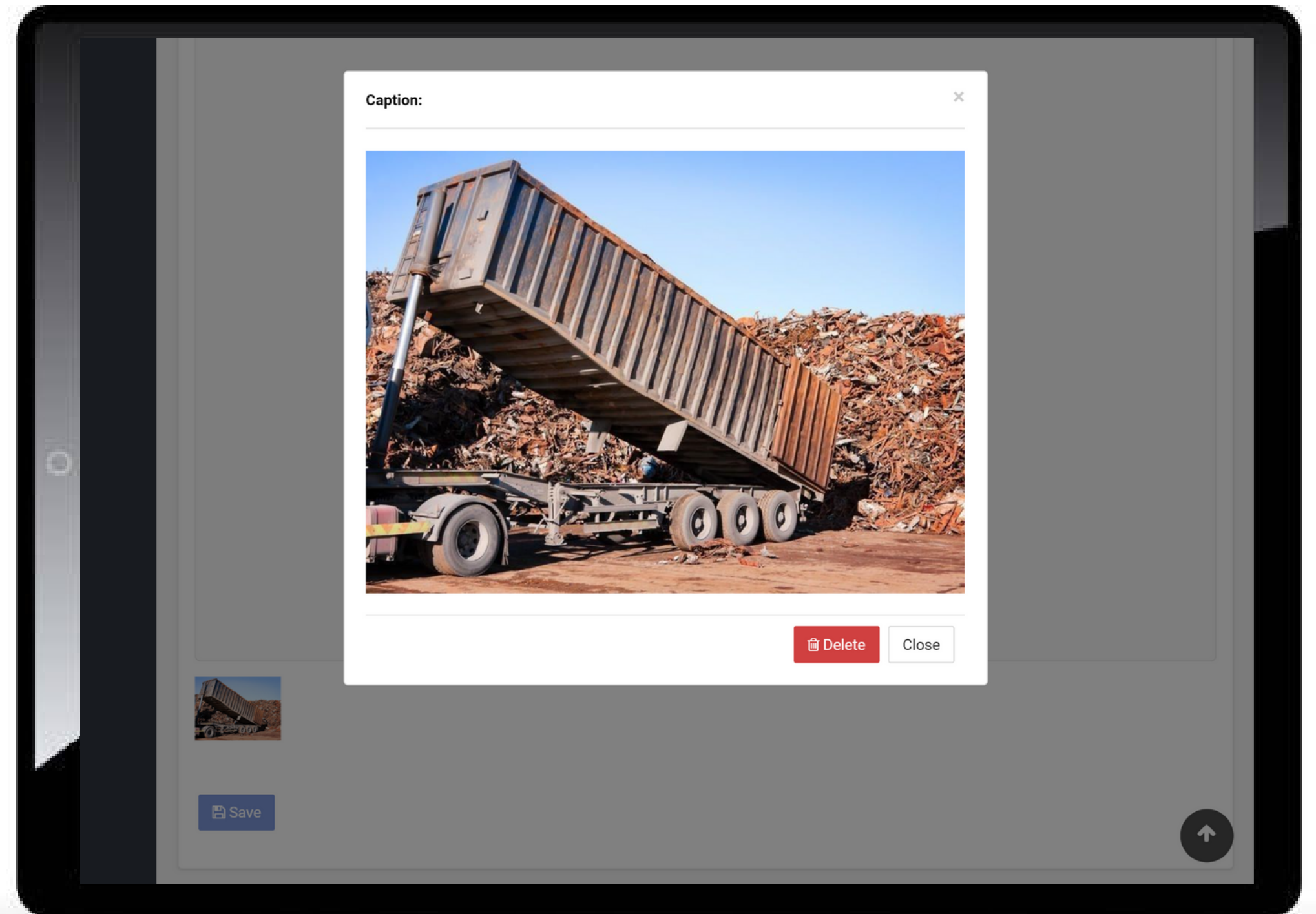


Product information from the tablet is updated for second weighing & their respective quantities are being calculated automatically.



The ticket can be produced as PDF or printed anytime as long as it exist in the database.

Weighing photos
can be reviewed on
the tablet
afterwards.



The grading module is accessible by both phone and tablet.

